



We are pleased to offer Units of Competency in 3 different clusters. Cluster groups focus on one specific aspect of hairdressing. If you have ever thought about enrolling in Certificate III in Hairdressing, but time or money has been an obstacle, this is the perfect taste test of what the industry has to offer. Training in clusters offers the flexibility to work around your lifestyle, allowing you to work at your own pace. Cluster training is also great for make up artists who want to expand their service offering.

All the prerequisite units required from the national hairdressing package are included in the cost. At the end of your program you'll be issued with a Statement of Attainment, outlining the units you have successfully completed. Courses include theory, mannequin head work and practical work and assessments with real clients in our on-campus salon.

Who will this type of training suit: mature aged students, make up artists, people with limited time, salon owners who have no formal hairdressing training, anyone on a budget or those who want to receive and official statement of attainment for their skills



COURSE INFORMATION

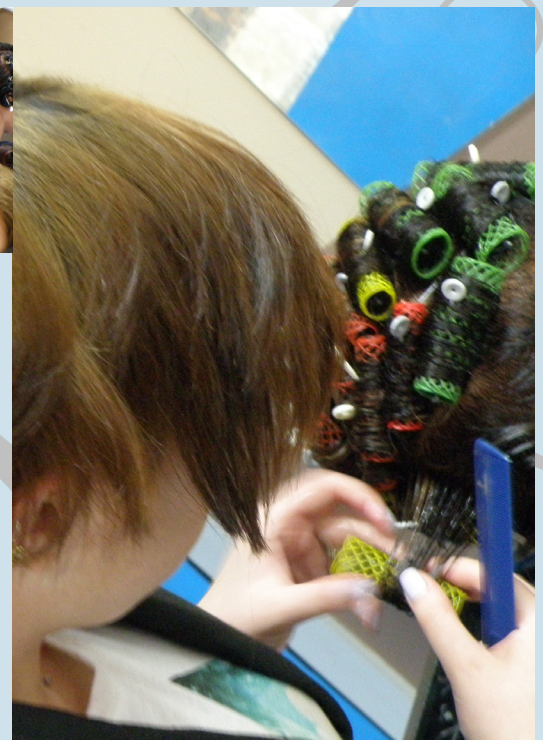
Tool kit provided with course fees.

Study Patterns:
Varies per unit

Campus:
Brisbane and Gold Coast

Payment plans available

BSH Provider No. 03319G
RTO No. 32488



Sculpting Units

Learn Male and Female Cutting Techniques

If you want to cut it above the rest, this course is your introduction to male and female cutting. Teaching you all the cutting techniques including one length, graduated and layered cuts plus combing techniques to be able to create any style.

Unit	Unit Name	Unit	Unit Name
SIHHBA-S201A	Perform shampoo & basin services	SIHHHC-S305A	Apply over-comb techniques
SIHHHX-S302A	Apply one-length solid haircut structures	SIHHHC-S306A	Combine structures for current haircut designs
SIHHHC-S303A	Apply graduated haircut structures	SIHHHC-S307A	Combine haircut structures for traditional & classic men's haircut designs
SIHHHC-S304A	Apply Layered haircut structures	SIHHHC-S308A	Design & maintain beards & moustaches

DURATION

14 weeks full-time

Part-time option available by request

TIMETABLE

Theory classes: 9am - 4.30pm

Practical classes: Mon - Thurs: 9am - 5pm
Fri: 8.30am - 5pm

COURSE COMMENCES

Anytime by arrangement

COST

Colour Units

Learn latest colouring techniques

Temporary colours, regrowth applications and foiling techniques, these units will allow you to have a fully comprehensive course in colour.

Unit	Unit Name	Unit	Unit Name
SIHHBA-S201A	Perform shampoo & basin services	SIHH-CLS302A	Colour & lighten hair
SIHHOH-S201A SIHHIN-D201A	Apply salon safety procedures Maintain and organise tools, equipment & work areas	SIHH-CLS303A	Design & perform full & partial highlighting techniques
SIHHOH-S201A	Apply salon safety procedures	SIHH-CLS304A	Neutralise unwanted colours and tones
SIHH-SC301A	Apply the principles of hair-dressing science	SIHH-CLS305A	Perform on-scalp full head & retouch bleach services

DURATION

13 weeks full-time

Part-time option available by request

TIMETABLE

Theory classes: 9am - 4.30pm

Practical classes: Mon - Thurs: 9am - 5pm
Fri: 8.30am - 5pm

COURSE COMMENCES

Anytime by arrangement

COST

Design Units

Be able to create artwork of upstyles

Areas covered: braids, twists, rolls, knots, loops, blowdrying, finger waves, hot iron curling and straightening.

Option 1: Complete the design units listed from the training package SIH30111 and receive a nationally recognised Statement of Attainment upon completion.

Option 2: Complete a short workshop in design. This will be an introduction to the units in the training package and a Statement of Attendance will be issued upon completion.

Unit	Unit Name	Unit	Unit Name
SIHHBA-S201A	Perform shampoo & basin services	SIHHH-DS303A	Design and apply short to medium length hair design finishes
SIHHH-DS202A	Apply braiding techniques	SIHHH-DS304A	Design and apply long hair design finishes

DURATION

Option 1: 35 days

Option 2: 20 days

Part-time option available by request

TIMETABLE

Theory classes: 9am - 4.30pm

Practical classes: Mon - Thurs: 9am - 5pm, Fri: 8.30am - 5pm

COURSE COMMENCES

Anytime by arrangement

COST

Men's Cutting Units (Barbering)

Learn Male & traditional barbering techniques

If you want to cut it above the rest, this course is your introduction to male and female cutting. Teaching you all the cutting techniques including one length, graduated and layered cuts plus combing techniques to be able to create any style.

Unit	Unit Name	Unit	Unit Name
SIHHHC-S301A	Design haircut structures	SIHHHC-S308A	Design and maintain beards and moustaches
SIHHHC-S305A	Apply over-comb techniques	SIHHHC-S309A	Perform face and head shaves
SIHHHC-S307A	Combine structures for traditional and classic men's haircut designs		

DURATION

TIMETABLE

COURSE COMMENCES

COST